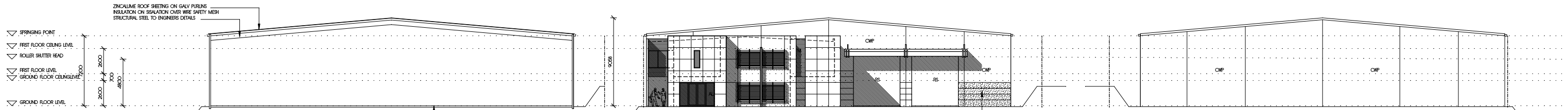


NORTH ELEVATION

SOUTH ELEVATION

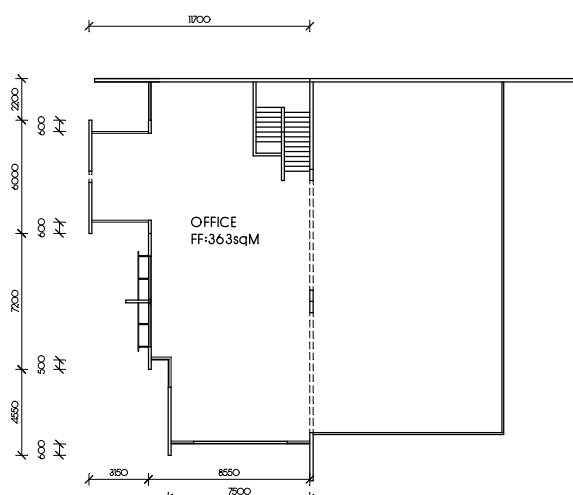


WAREHOUSE TYPICAL SECTION

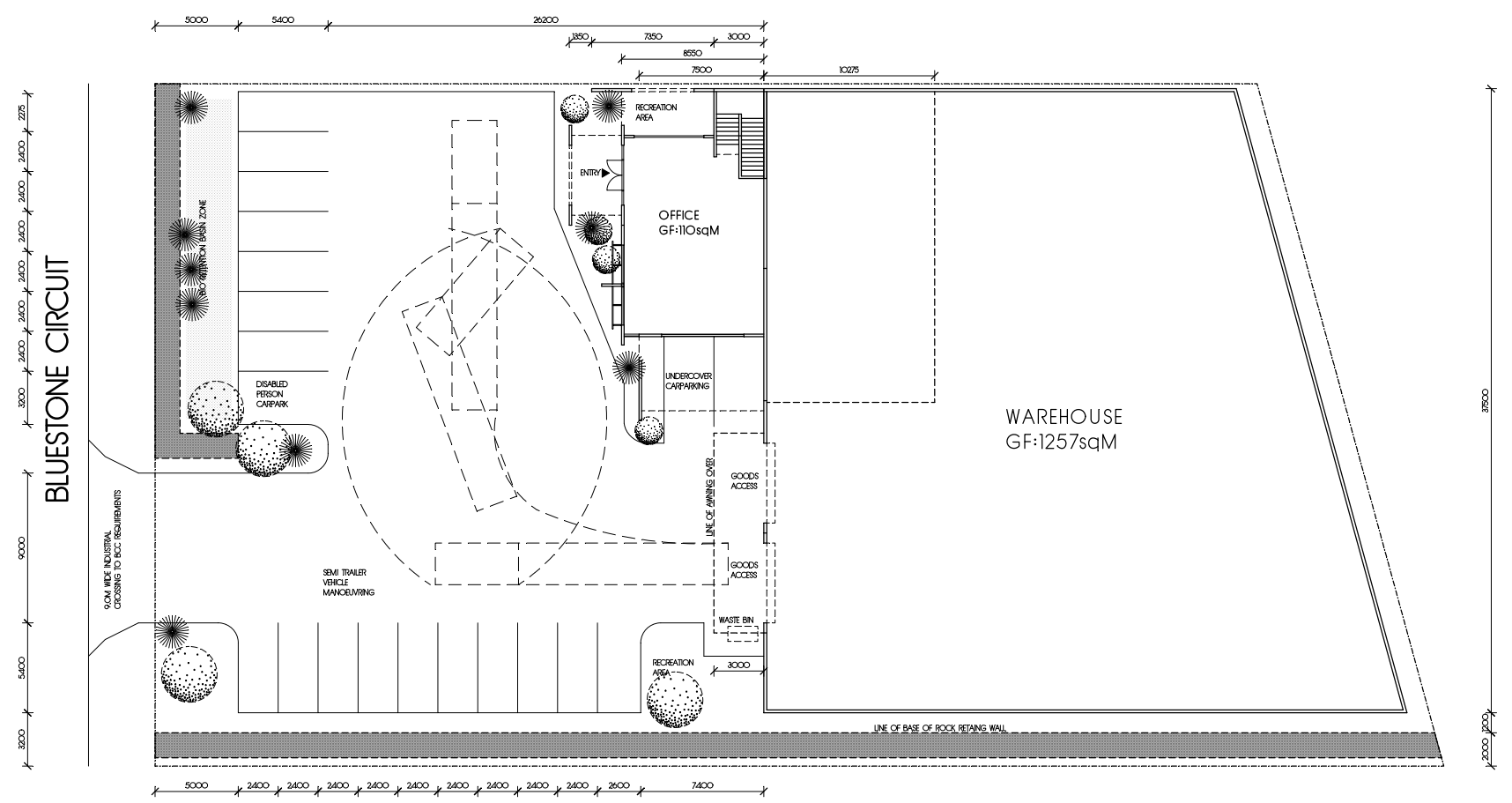
WEST ELEVATION

EAST ELEVATION

- LEGEND
- AL ALUMINUM FRAMED GLAZING
 - CMP CONCRETE WALL PANEL
 - RS ROLLER SHUTTER
 - CFC COMPRESSED FIBRE CEMENT
 - M ZINCALUME SPANDER H TEN WALL CLADDING RUN HORIZONTAL



FIRST FLOOR PLAN



SITE PLAN/GROUND FLOOR PLAN

PROJECT ANALYSIS

SITE AREA LOT 23: 2947sqM

GROSS FLOOR AREAS
 WAREHOUSE AND ANCILARY OFFICES:
 GF:13674FF:363-730sqM

LANDSCAPING
 420sqM APPROX:14% OF SITE

CARPARKING
 2CARS/UNIT+1 CAR/100sqM GROSS FLOOR AREA
 ~20 CARS REQUIRED / 20CARS PROVIDED

SITE COVER
 8CARS/100sqM CAR/COVERED AREAS/SITE AREA:60%
 ~60% SITE COVER APPROX

NEW WAREHOUSE UNIT

LOT 23 BLUESTONE CIRCUIT
 DARRA

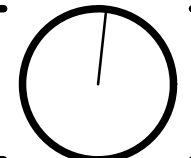
SITE PLAN/FLOOR PLANS/ELEVATIONS

SUBJECT TO AUTHORITY APPROVALS AND FINAL SURVEY

SCALE 1:200 (A1)
 MARCH 2009

CARL BRUNSILL ARCHITECTS

100 WILSON STREET
 SUITE 101
 DARRA QLD 4009
 PH: 07 4074 0000
 WWW.CARLBRUNSILL.COM



A	PLANNING APPLICATION 16/2008	DRAWINGS NOT INTENDED AS APPROVED OR APPROVED AMENDMENTS ARE TO BE TREATED AS PRELIMINARY ONLY. THE COPYRIGHT OF THIS DOCUMENT RESIDES WITH CARL BRUNSILL ARCHITECTS PTY LTD. NO LICENSE IS ADVISED OR GIVEN TO FURTHER DOCUMENTATION WITHOUT WRITTEN CONSENT. DO NOT SCALE DRAWINGS.
B	AMENDED TOWN PLANNING APPLICATION 20/2008	
C	AMENDED TOWN PLANNING APPLICATION 16/2007	
		CHECKED
		APPROVED AND SIGNED BY
		DATE

200843

SK 5 B